

Total No. of printed pages = 2

ME 181305

Roll No. of candidate

--	--	--	--	--	--	--	--	--	--

5/3/22

2021

MINA CHOWDHURY CENTRAL LIBRARY
(JNTU & JPS)
Arya Hat, Hyderabad
Phone: 781117

B.Tech. 3rd Semester End-Term Examination

MACHINE AND ASSEMBLY DRAWING

(New Regulation & New Syllabus)

Full Marks – 70

Time – Four hours

The figures in the margin indicate full marks
for the questions.

Answer any three questions from Part A, and Part B is Compulsory.

PART – A

1. Draw the following (4 × 3 = 12)
 - (a) External Unified Thread
 - (b) Acme thread
 - (c) Front view of a Flanged Nut
 - (d) Snap rivet and Pan rivet
2. Draw Three views of a hexagonal nut for a 24 mm diameter bolt, according to approximately standard dimensions. (12)
3. Draw top view and sectional front view of a single riveted single strap but joint for joining two 10 mm thick mild steel plates. (12)
4. Sketch neatly sectional front view of a knuckle joint for connecting two 25 mm diameter rods. Give all important dimensions. (12)
5. Draw half sectional front view of a flanged coupling suitable for a 60 mm diameter line shaft of an engineering workshop. Give important dimensions of the coupling. (12)

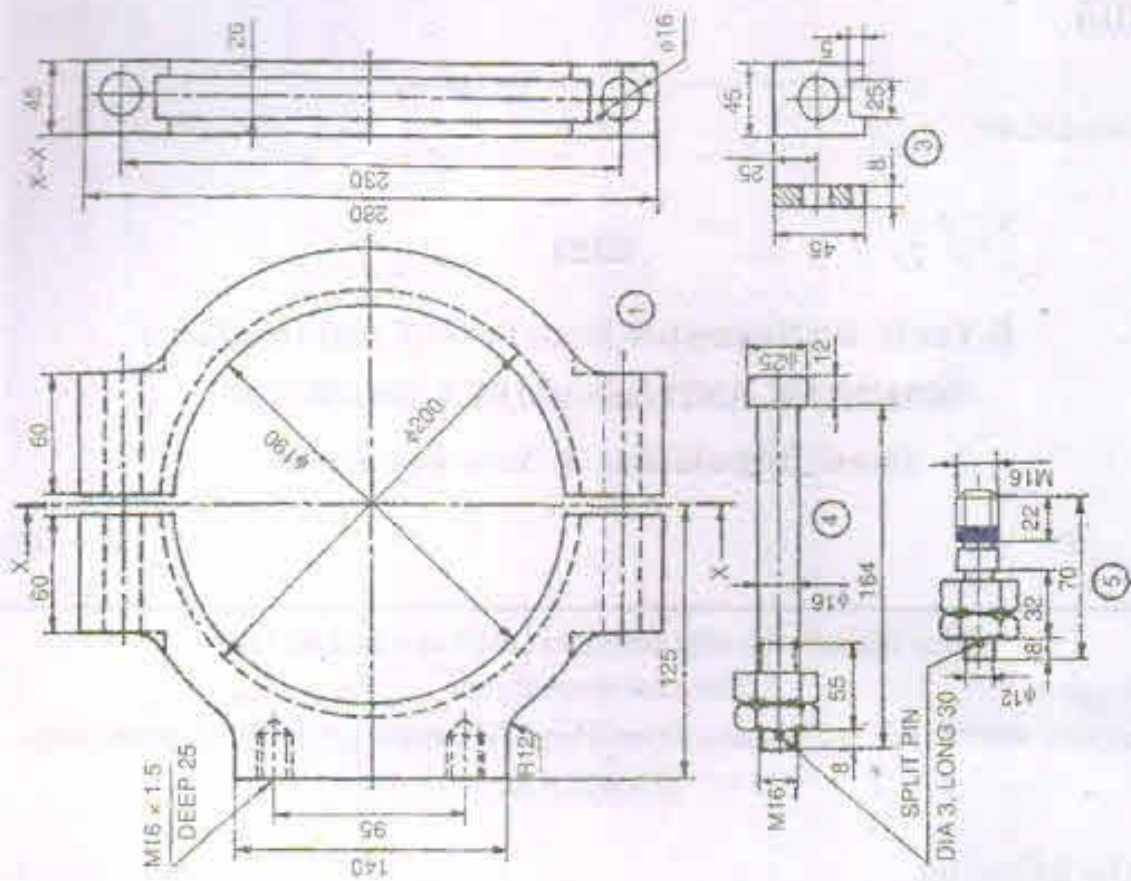
PART – B

6. Details of an eccentric is given in Figure (1). Draw the following views of the eccentric with all parts assembled together. (24+10)
 - (a) Front view and
 - (b) Top view

The particulars of the parts are shown in the table

Parts No.	Name of the Part	Material	Qty.
1	Straps	CI	2
2	Sheave	CI	1
3	Packing strip	Leather	2
4	Strap bolt	MS	2
5	Stud with nut	MS	2

[Turn over



BILVA CHOWDHURY CENTRAL LIBRARY
 J. J. MIT & SPS
 2214 Half-Wapara,
 W. Wahab - 751017

